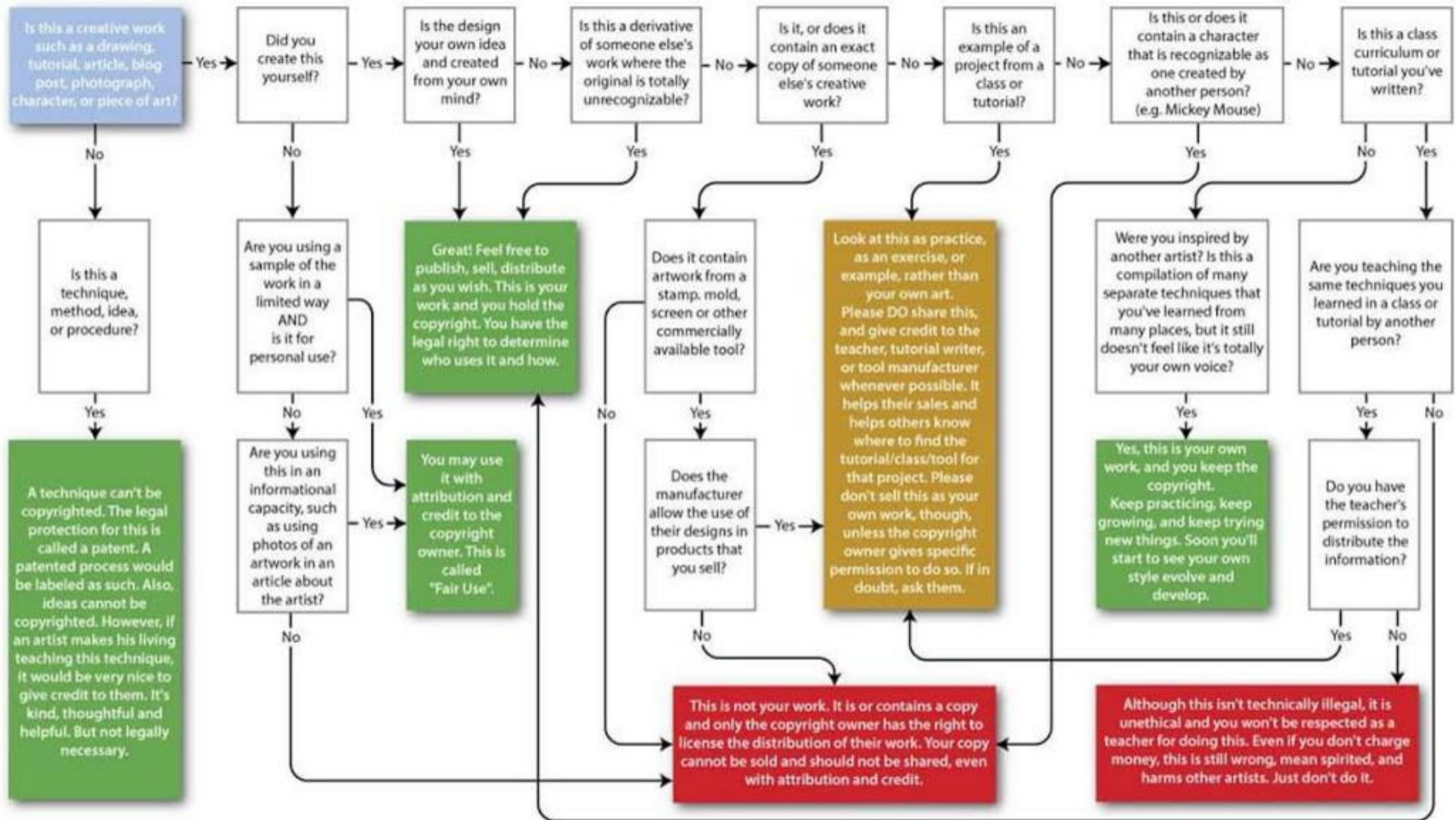


Copyright Guidelines for Polymer Clay Artists

Copyright is confusing. This graphic is intended as a general guideline and overview of the most commonly encountered copyright dilemmas for polymer clay artists today.



This work is licensed under a Creative Commons Attribution-NoDerivatives 4.0 International License. This means you can share this infographic without altering or modifying it, as long as you include attribution.

Please Credit: Ginger Davis Allman, www.TheBlueBottleTree.com. Thank you!

Copyright © 2015, Ginger Davis Allman.

Disclaimer: This overview is not intended to be comprehensive or to be used in place of seeking legal advice. For clarity in your particular situation, please consult an attorney in your local country or jurisdiction.

Sources: www.copyright.gov, <http://fairuse.stanford.edu/overview/fair-use/what-is-fair-use/>, <http://www.bitlaw.com/copyright/index.html>.

Rev. 1.1 Mar. 2016